

# USER MANUAL

---

Model : SM42HA

HDMI Matrix 4x2  
(4K@60Hz)

Enjoy the vivid world

## Introduction :

The HDMI 4K@60Hz matrix 4x2 can connect 4 HD signal sources to 2 HD display terminals with optical fiber or stereo headphone output. The matrix allows four HDMI devices to be switched or split easily to two HDMI compatible monitors or projectors. And any output ports can realize independent audio output by optical fiber or stereo headphone.

Our devices offer solutions for noise, space and security concerns, data center control, information distribution, conference room presentation, school and corporate training environments.



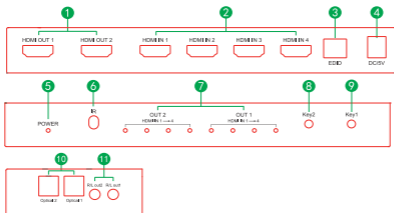
## Features :

- \* Support 3D video format
- \* Support for 4K (input) resolution 2K (output) (Down scaler)
- \* Support 2 HDMI audio outputs, 3.5mm earphone jack and optical output at same time
- \* 4 HDMI inputs switch and split to 2 HDMI displays.
- \* Support LPCM/Dolby/DTS 5.1 channel.

## SPECIFICATIONS :

HDMI resolution .....	up to 3840*2160/60Hz
Support video format .....	8/10/12 bit deep color
Support audio format .....	LPCM/DTS/Dolby-AC3
Max bandwidth .....	600MHz
Max baud rate .....	3x6Gbps
Input cable distance .....	4K/30Hz ≤15M AWG26 HDMI standard cable 4K/60Hz ≤5M HDMI 2.0 standard cable
Output cable distance .....	4K/30Hz ≤15M AWG26 HDMI standard cable 4K/60Hz ≤5M HDMI 2.0 standard cable
HDMI Input .....	4
HDMI Output .....	2
Max working current .....	600mA
Power adapter format .....	Input: AC (50HZ, 60HZ) 100V-240V; Output: DC5V/1A
Operating Temperature range .....	(-15 to +45 °C)
Operating Humidity range .....	5 to 90%RH (No Condensation)
Dimension (L x W x H) .....	199x70x27 (mm)
Weight .....	300g

## SPECIFICATIONS :



- 1: HDMI OUT1-2 --- HDMI output;
- 2: HDMI IN1- 4 --- HDMI input;
- 3: EDID --- EDID management;
- 4: DC/5V --- 5V power supply;
- 5: POWER --- Power Indicator;

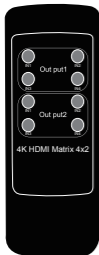
- 6: IR --- IR Receive;
- 7: HDMI IN1- 4 --- HDMI input indicator
- 8: Key2 --- Video switching button
- 9: Key1 ---Video output switching button
- 10: Optical1-2 --- Optical output
- 11: R/L OUT1-2 --- Stereo output

### EDID setting

Position 1	Position 2	Position 3	Position 4	Function
0	0	0	0	Copy the EDID of HDMI OUT 1
0	0	0	1	Copy the EDID of HDMI OUT 2
0	0	1	0	3D 1080P 2 CH LPCM
0	0	1	1	3D 1080P 5.1 CH (LPCM/Dolby/DTS)
0	1	0	0	2D 1080P 2 CH (LPCM)
0	1	0	1	2D 1080P 5.1 CH (LPCM/Dolby/DTS)
0	1	1	0	3D 4k 2 CH (LPCM)
0	1	1	1	3D 4k 5.1 CH (LPCM/Dolby/DTS)

Noted: the dial switch to dial downward is 1, dial upward is 0.

### The Remote Control instruction :



- 1) The four buttons on Output 1 is the corresponding input source IN1-IN4 which out from Output 1, IN1-IN4 can be switched freely.
- 2) The four buttons on Output 2 is the corresponding input source IN1-IN4 which out from Output 2, IN1-IN4 can be switched freely.

#### Instruction of Buttons and LED:

1. Instruction of LED: IN1-IN4 indicator is the corresponding input sources out from Output 1 or Output 2.
2. Operation of Buttons: SWITCH 1 or SWITCH 2 is used to switched the corresponding input source out from Output 1 or Output 2.

## Connection Diagram :

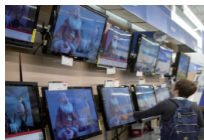


## Operating and Connecting :

1. Connect each HDMI source devices and input of HDMI Matrix with HDMI cable.
2. Connect display devices and output of HDMI Matrix with HDMI cable.
3. Connect audio output and stereo amplifier with stereo headphone or fiber.
4. Connect 5V power supply to the HDMI 4x2 Matrix.
5. Use the IR remote or button control to switch the signal source freely.

NOTE: HDMI port and audio ports are connected according to user needs, not every be connected; but not reversed.

## Application scenario :



TV Store



Teaching room



Video Conference

## Notes :

Pls use the machine as the instruction listed to keep the long use lifetime of the machine.

1. The machine should be placed at the spot far from the Damp, High-Temperature, Dusty, Erosive, and oxidative environment.
2. All parts will be free from the strong shake, hit, fall.
3. Touching the power adaptor with the wet hands is prohibited.
4. Pls hold the power adaptor head and do not pull the power cord when cut off from the socket.
5. Pls turn the power off when the machine is not used for long time.
6. Pls do not open the cover and do not touch the inside parts.
7. Pls use the original factory power adapter.

## Accessories :

- |                      |      |                     |      |
|----------------------|------|---------------------|------|
| 1. HDMI Matrix 4X2   | 1PCS | 3. 5V power adapter | 1PCS |
| 2. IR Remote Control | 1PCS | 4. User Manual      | 1PCS |