



Perfectly Track and Capture Attendees

CAM570

4K Dual Lens Audio Tracking Camera for Medium and Large Rooms



AVer CAM570 is a 4K dual lens camera with a 36X Total zoom PTZ camera and a second AI lens with 95°FOV. Equipped with built-in audio sensor, CAM570 detects human voices up to 10M and offers Audio Tracking function. AI technology such as Smart Gallery and Gesture Control can capture every attendees up-close with premium video quality.



Audio Tracking



Dynamic Detection



Smart Gallery



Gesture Control



Dual Lens



4K



HDMI 1080p

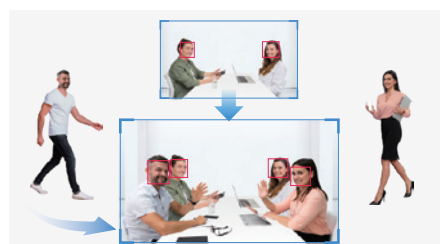
Built-in Audio Sensor Enables Audio Tracking

Easily focus on active speaker with Audio Tracking Mode and Presentation Mode. The camera will follow the speaker automatically or you can set up a preset point to focus on a specific area. The built-in sensor picks up human voices up to 10 meters without being disturbed by a local speakerphone.



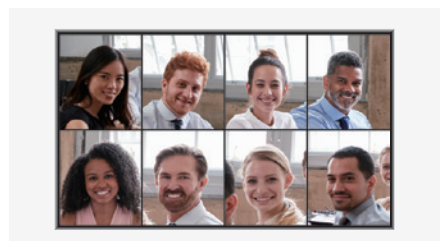
Dynamic Detection Optimizes Meeting Experience

The dual-lens design detects real-time motion precisely while offering a complete view of the room simultaneously. When the second AI lens detects a newcomer walking in, it triggers the first PTZ camera to re-frame the participants, ensuring all meeting attendees are instantly captured for a seamless collaboration.



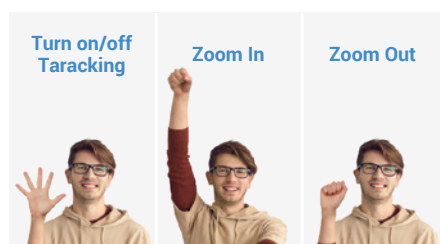
Smart Gallery Delivers a Clearer View of Faces

Perfectly see everyone in the room. Thanks to AI technology, Smart Gallery crops meeting attendees and displays them in equal individual feeds. It highlights participants' facial and body expressions, leading to effective hybrid meetings.



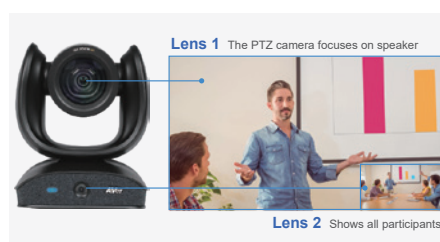
Interact with CAM570 Using Touchless Gesture Control

With the application of AI to recognize gestures and interpret commands, you can turn on/off the tracking function and zoom in/out without any direct physical touch. Reduce physical touchpoints and improve workplace hygiene.



Picture-in-Picture Displays Preferred Conference View

CAM570 includes a PTZ camera with 36X total zoom and a second AI lens to provide a panoramic view. The dual-lens design offers a speaker view and wide-angle view simultaneously with various PIP layout options. It is ideal for larger and more complex meeting spaces.



Product Specifications

Dual Camera

PTZ optical zoom lens

- Image Sensor: 4K Sony Exmor CMOS, crystal clear in any lighting
- Frame Rates: (16:9) 4K 30fps; 1920 x 1080, 1600 x 900, 1280 x 720, 960 x 540, 848 x 480, 800 x 448, 640 x 360, at 60, 30, 15fps; (4:3) 1280 x 960, 800 x 600, 640 x 480 at 60, 30, 15fps
- 36X Zoom*: 12X Optical; 3X Digital Zoom
- Viewing Angles: DFOV 90°; HFOV 78°; VFOV 50°
- Lens Focal Length: 3.4mm (Wide) ~ 40.3mm (Tele)
- Lens F#: 1.8 (Wide) ~ 3.6 (Tele)
- Wide Dynamic Range (WDR): Superb backlight compensation technology for optimizing light balance in high-contrast conditions
- Minimum Focus Distance: 1.5 m
- Viewing Area: Pan: ±170°; Tilt: +90° (up) / -30° (down)
- Preset Number: 10 via IR remote, 128 via RS-232
- Image flip and image mirror

Secondary fixed lens (AI lens)

- Image Sensor: 4K Sony Exmor CMOS
- Viewing Angles: DFOV 90°; HFOV 85°; VFOV 52°

Innovative Features

- SmartSpeaker: Automatically track human voice and focus on the speaker
- Dynamic Detection: Secondary AI lens detects all participants, new participants trigger PTZ lens to dynamically frame all participants
- Presentation Tracking: Voice-triggered tracking speaker with both preset area and people tracking*
- Simultaneous 3-way output: USB, HDMI, and IP connections
- Gesture Control provides intuitive camera controls
- Smart Gallery* function offers great visibility for individual participants in the meeting room
- Get rid of USB cable connections with AVer Virtual USB Streaming technology* (One RJ45 cable transfers IP streaming to USB)
- Audio Tracking: Integration with 3rd party ceiling microphone (Shure/ Sennheiser/ Yamaha) via AVer Preset Link* function.

Connectivity

- USB Type-B 3.1 connector, backward compatible with USB 2.0
- 12V/2A DC jack power adapter
- Mini DIN9 for RS232 in & out connection (VISCA control panel and camera daisy-chain)
- IP (RJ45)
- HDMI
- Audio Line-in: To avoid tracking the speakerphone, please insert the speakerphone Line-out to CAM570's Line-in port.

Audio sensor

- Audio Pick-up Range: 10m, ±60°
- 3 pairs of sensor array, each composed of 4 sensors
- The built-in sensor is for the audio-tracking function, it cannot be used as an audio source for video-conferencing software

HDMI & PoE

- HDMI 1.3: 1080p 30fps/60fps
- PoE+: 802.3at

Video Format

- YUV, YUY2, MJPEG
- Network Video Compression Format: H.264
- Network Protocol: RTSP, RTMP

USB

- 3.1 Gen 1, backward compatible with USB 2.0
- UVC 1.1 (USB video), UVC 1.5

Control

- IR Remote Control
- VISCA/Pelco P/Pelco D via RS232 (128 preset points via VISCA command)
- Remote Side: VISCA over IP, IP (RJ45)
- UVC Plug and Play
- WebUI: Browser IP access via Chrome (IE not supported)
- OSD Setting: HDMI out to TV Monitor
- Room Management (PTZApp 2)

Power Supply

- AC 100V–240V, 50/60 Hz; Consumption: 12V, 2A
- PoE+: 802.3at

Software Tools

Room Management (PTZApp 2)

- Supports Windows® 7 or later, macOS® 11.6 or later

Enterprise Management (PTZ Management)

- Supports Windows® 10 or later

Cloud Management

- Supports Windows® 7 or later, macOS® 10 or later

EZManager 2

- Supports Windows® 7 or later

EZLive

- Supports Windows® 7 or later, macOS® 10.13 or later

Environment Data

- Operation temperature: 0 to 40°C
- Operation humidity: 20% to 80%
- Storage temperature: -20 to 60°C
- Storage humidity: 20% to 80%

Dimensions

CAM570 Camera:

- Dimensions (W x H x D): 17 x 19 x 17.3 cm
- Net Weight: 2.1 kg

Remote Control:

- Dimensions (W x H x D): 20 x 5 x 2.1 cm
- Net Weight: 90g

Package Contents

- CAM570
- Power Adapter (10 ft/3 m)
- USB 3.1 Type-B to Type-A Cable (3 m)
- Remote Control
- Mini DIN9 to mini DIN8 RS232 Adapter Cable
- HDMI Cable (3 m)
- Wall Mount Bracket and Screws
- Tripod Screw
- Drill Paper

Optional Accessories

- FONE540
- Mini DIN 8 to D-Sub 9 RS232 Cable
- Ceiling Mount
- Foldable TV Mount
- USB 2.0 Type-B to Type-A Cable (5 m)
- USB 3.1 Extension Cable (10 m/20 m/30 m)
- 1-Port PoE+ Injector

Security and Mount

- Kensington Lock
- 1/4" Tripod Mounting Screw
- Wall Mount Bracket
- Foldable TV Mount (Optional)
- Ceiling Mount (Optional)

System Requirements

- Windows® 7/10/11
- macOS® 10.14 or later
- Google Chromebook™ with Chrome OS 94.0.4606.114 or later

Hardware Specs

- 3.2 GHz Intel® Core™ i5-4460 processor
- 4 GB RAM or more
- USB 3.1 port, backward compatible with USB 2.0

Warranty

- Camera: 3 Years
- Accessories: 1 Year

Compatible Applications

Zoom, Microsoft® Teams, Skype, Skype for Business, Google Meet, RingCentral, BlueJeans, Intel® Unite™, Fuze, Adobe® Connect™, CyberLink U Meeting™, Cisco WebEx® GoToMeeting™, LiveOn, Microsoft® Lync™, TrueConf, V-Cube, Vido, vMix, WebRTC, Wirecast, XSPiit

* Please use Room Management (PTZApp 2) to set up 36X zoom, Smart Gallery, USB Virtual Streaming, and Preset Link functionality.
 ** Specifications may vary depending on countries and are subject to change without notice.

Product Appearance

Front



Back



©2025 AVer Information Inc. All rights reserved.
 All brand names and logos are trademarks of their respective companies.

Distributor/Dealer