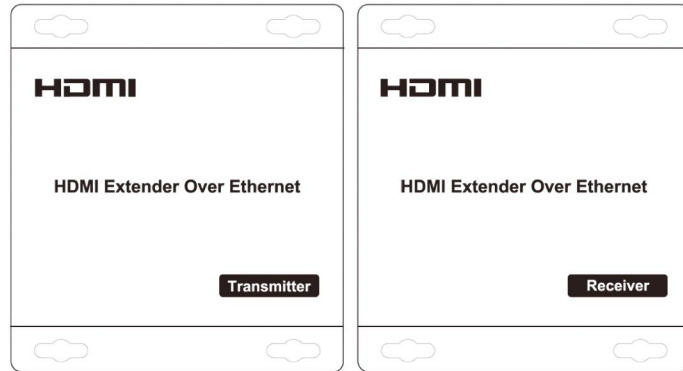


HDMI Extender over Ethernet

Model : FE-120

Operating Instructions



Dear Customer

Thank you for purchasing this product. For optimum performance and safety, please read these instructions carefully before connecting, operating or adjusting this product. Please keep this manual for future reference.

FEATURES

- Compliant HDCP 1.2
- Uses off-the-shelf gigabit IP switches for extension and distribution
- Extends 1080p HDMI signals up to 120m over a single UTP Cat5e/6 cable
- Flexible and scalable HDMI 1080p Video Wall Broadcasting with Gigabit Ethernet LAN
- Multicasting and broadcasting architecture, adding more displays without adding LAN bandwidth loading
- Support Point-to-Point, Point-to-Many and Many-to-Many network configuration
- With IR Control function ,it allows you control back the source at the end of destination
- Maximum 3 layers of ethernet switches could be passed through

NOTICE

Our company reserve the right to make changes in the hardware, packaging and any accompanying documentation without prior written notice.

TABLE OF CONTENTS

Specifications
Package Contents
Panel Descriptions
Connecting and Operating
Typical Application

SPECIFICATIONS

Operating Temperature Range	-5 to +35℃ (+23 to +95°F)
Operating Humidity Range	5 to 90%RH (No Condensation)
Input Video Signal	0.5-1.0 Volts P-P
Input DDC Signal	5 volts p-p(TTL)
Support Video Format	DTV/HDTV:480i/576i/480P/576P/720P/1080i/1080P
Video Output	HDMI
Transmission Distance	1080P 8-bit 120m(Maximum) over single CAT5E/6 /24AWG/Solid
Power consumption	TX:3watts;RX:3watts((Maximum)
IR wave length &frequency	Wave length:940nm,frequency 38kHz
Dimension (L×W×H)	103.5x93.5x24.6mm
Net Weight	Receiver:220g,Transmitter:220g
TX	Default IP address:192.168.168.55 MAC address:00:0b:78:00:60:01
RX	Default IP address:192.168.168.56 MAC address:00:0b:78:00:60:02

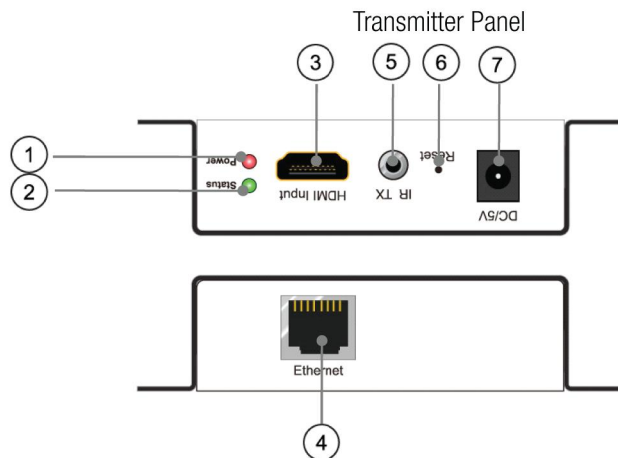
Note1: Specifications are subject to change without notice. Mass and dimensions are approximate.

Note2: One TX to many RX or many TX connect to many RX, IP and MAC address must be different.

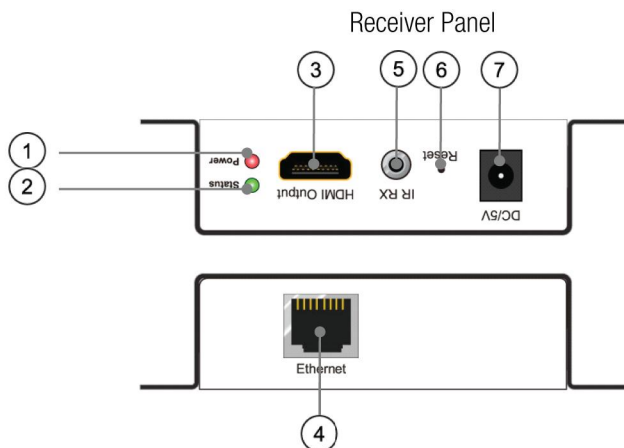
PACKING CONTENTS

- 1) Main Unit. Transmitter & Receiver HDMI Extender
- 2) Power adapter DC 5V 1Ax2PCS
- 3) IR-TX cable & IR-RX cable
- 4) Operating Instructions

PANEL DESCRIPTIONS



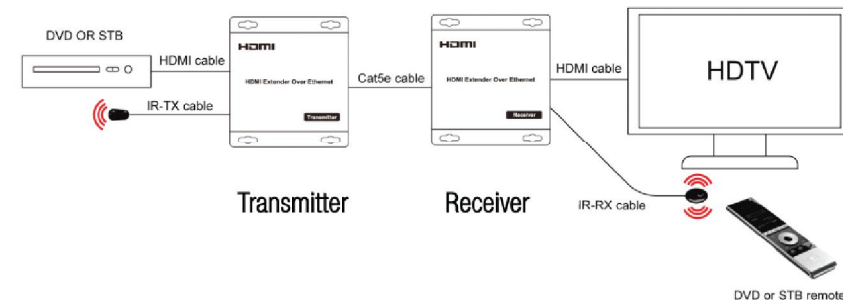
- ① Indicator of power input
- ② Status of signal connection
- ③ HDMI input
- ④ Ethernet port
- ⑤ IR-TX port
- ⑥ Reset button
- ⑦ Power input port



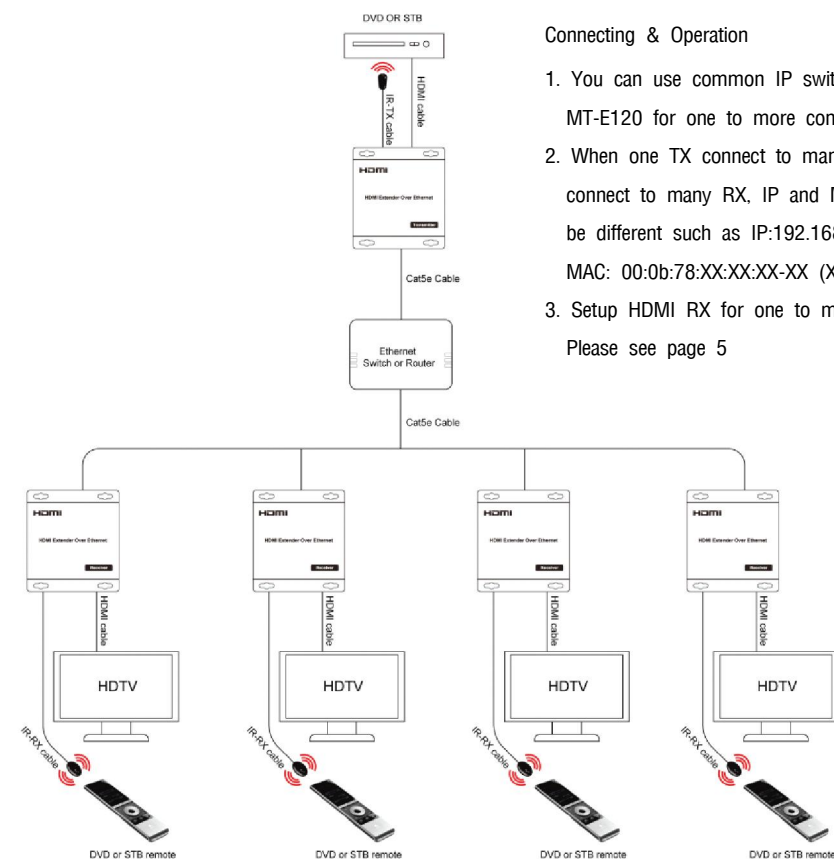
- ① Indicator of power input
- ② Status of signal connection
- ③ HDMI output
- ④ Ethernet port
- ⑤ IR-RX port
- ⑥ Reset button
- ⑦ Power input port

TYPICAL APPLICATION

1) One to One



2). One to more



Connecting & Operation

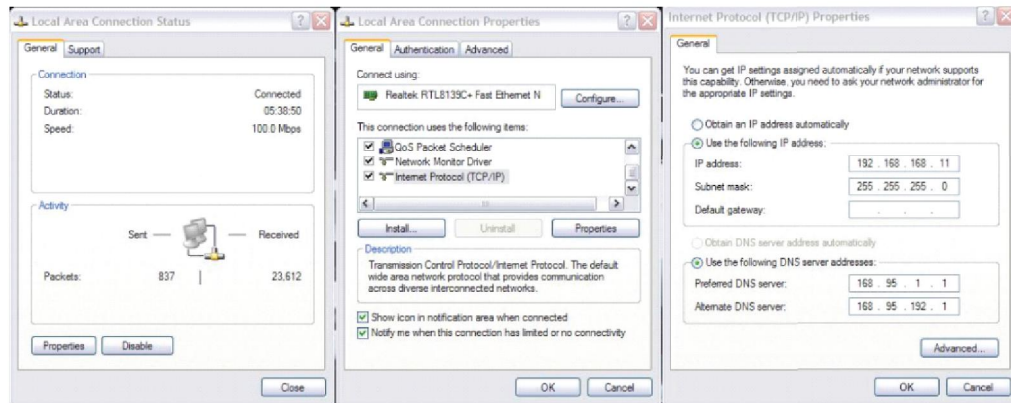
1. You can use common IP switch to work with MT-E120 for one to more connection
2. When one TX connect to many RX or many TX connect to many RX, IP and MAC address must be different such as IP:192.168.168.xx (xx:1-255); MAC: 00:0b:78:XX:XX:XX-XX (XX:01-FF)
3. Setup HDMI RX for one to many connection
Please see page 5

3). More to more

For more to more connection please see connecting & operating from FE-S24 User Manual

Setup HDMI TX and HDMI RX

Step 1: Assign the PC or laptop IP address through Control Panel, Network Connections, Local Area Connections Status, Properties, Internet Protocol (TCP/IP), Use the following IP address. Type the IP address field with **192.168.168.11 (0-255)** and Subnet mask with **255.255.255.0**. After that press OK to save the configuration.



Step 2: turn on the device, the red light becomes lighting, waiting about 10 seconds, the green light starts working, at this time to press the reset button about 5-10 seconds to turn off the green light.

Step 3: Use an Ethernet Cable to connect the PC or laptop and the device. The power LED is still red and the status LED becomes green blink.

Step 4: Ping the connected device through the sequence, Start, Run, cmd, ping **192.168.168.55** or ping **192.168.168.56**. You will receive the reply if the connection is established. Use IE browser to get access the web server. You can setup IP address, subnet mask, gateway, and MAC address in this page.

Step 5: After click Apply button, the device shows Status LED green turn off. Turn off the device.

