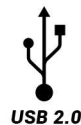


LX-550U

**Desktop
Visualizer**



Remote Control

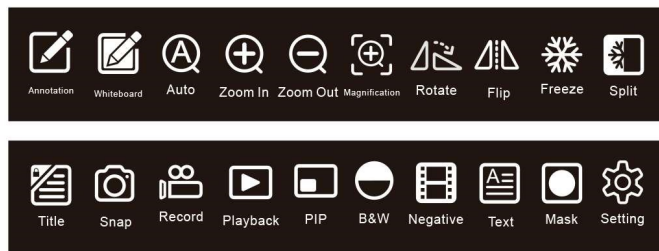


Wireless Tablet

- **High resolution image capture**
- **Large space for shooting area**
- **Intuitive control keys**
- **Precise autofocus**
- **High resolution video camera**
- **Capture Full HD image and record Full HD video on SD card and playback**
- **Auto White Balance enables vivid color reproduction and prevents disturbing color changes during presentation**

Mouse control function

Effect keys



- Virtual Whiteboard, Image Annotation, Spotlight, Split Mask, Mirror, Rotation, B&W, Negative, Freeze, PIP, Text Mode, Playback, Snap, Record, Title
- Support more effects : Top/Bottom & Right/left, Image Split Comparison, Scroll to Zoom in/out, Pan
- Support full HD video record
- Build in Clear TEXT, Clear Image enhance technology
- Capture what you see : support image capture, video record, support annotation on picture and video
- Writing Tools : pen can choose 8 colors and dynamic 4 levels, eraser for erase the pen, geometric function

Virtual Whiteboard

- Annotate over live images, without a computer - simply connect a HID device such like Mouse, Wireless Tablet or Interactive Touch Screen
- Save the annotation to SD directly



Application

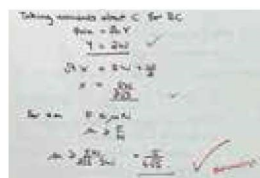
In Education and Training Purpose

- Stimulating students and keeping them engaged
- Show and Tell
- Science Experiments
- Zoom in on small items to see the details
- Demonstration how to operate a machine or device
- Art pictures or projects
- Display the hard to see document to audience

Product Specification

Model	LX-550U
Sensor Size	1/3" CMOS
Total Pixel	5,000,000
Lens	12X Optical Zoom 40X Digital Zoom
Auto Image Adjust	Yes
Focus	Auto / Manual Selectable
White Balance	Auto
Brightness Adjust	Auto / Manual Selectable
Camera Rotation	Vertical 330°
Video Resolution	XGA : 1024 x 768 SXGA : 1280 x 1024 WXGA : 1366 x 768 720P : 1280 x 720 1080P : 1920 x 1080
Frame Rate	1080P@30fps
Image Rotation	0°/90°/180°/270°
Arm Lamp	1.5W LED Lamps x 2
Input Connector	VGA (DB15FLC) x 2 HDMI x 1 Audio (Mini jack) x 2 MIC Build-in x 1
Output Connector	VGA (DB15FLC) x 2 HDMI x 1 Audio (Mini jack) x 1
Control Port	PS/2 (6 PIN) for Projector control RS232 x 1 for PC USB Type B x 1 USB Type A x 1 for mouse control
Image Save & Recall	64 Frames
Memory Card	SD
White Balance	Auto
Image Split (Vertical/Horizontal)	√
Image Title (Up/Down/Left/Right)	√
Image Mirror	√
Image/Text Mode Conversion	√
Negative/Positive Conversion	√
Black/White and Color Selection	√
Image Freeze	√
Mirror	√
Wireless Tablet	Optional
Remote Control	Build-in remote control socket
Power	100-240V , 50-60Hz (12V/4A external AC adapter)
Weight	5 kg.

***All specifications are subjected to change without notice



For checking the answer of the test with students



For science experiment



For presentation of summer vacation research project



For projecting the slides at the classes

Available from :